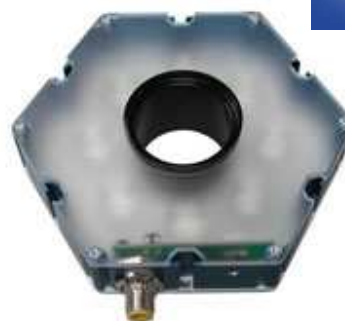


Features

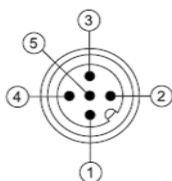


- Ring Light mounts to directly to all models of CCTV lenses
- Adapter Rings for all lens sizes
- Can also be mounted by T-Slot with T-nut
- High Output LED's housed in small industrial housing
- Built in smart driver with NPN & PNP control
- Intensity control by analog 0-10VDC or integrated pot
- Industrial Standard M12 style quick disconnect



Mounts to all CCTV lenses including – Tamron, Fujinon, Goyo, Computar, Pentax, Edmund & Navitar

Electrical Input	Voltage - 24 VDC +/- 10% Maximum 20 Watts
Analog Intensity	The output is adjustable from 0-100% of brightness by a 0 -10 VDC signal
Dimmable	The output is manually adjustable from 10-100% of brightness by potentiometer
Continuous Mode	Light will be in continuous mode by leaving signal on strobe input
Strobe	PNP ► +5VDC or greater to activate. NPN ► GND (<1VDC) to activate
Strobe Mode	The Light will operate in either continuous or strobe mode. In strobe mode, the output pulse width will track the pulse width of the strobe pulse.



1 = 24VDC
2 = NPN STROBE
3 = GND
4 = PNP STROBE
5 = 0-10VDC Analog

Standard M12 mating cable color code:

BROWN
WHITE
BLUE
BLACK
*GRAY (GREEN/YELLOW)

* 5 pin Standard M12 mating cable must be used: +VDC must be connected to pin 5 if Analog 0-10 VDC is not used.

R130 – XXX – X* —» Part Number Key

Product Family:
Ring Light
130mm

Color:
625 – Red
470 – Blue
505 – Cyan
530 – Green
IR 850nm
IR 940nm
395nm UV
365nm UV

Lenses:
N - Narrow

* Ring Light come standard with Wide lenses
CE Compliant and RoHS Compliant

Mounting



- Step Up adapter Rings mount lens directly to front of light
- Step Down Adapter Rings mount lens directly to back of light
- Adapter Rings mount directly to Cameras
- T-slots on 6 sides accept industrial T-nuts
- 6 threaded M4 mounting holes

Standard industrial T-slots on each side accept T-nuts



Rear mounting of Lens to Ring Light



Standard Adapter Kit – Part # SU46-25.5-27

Adapter Kit includes 2 step up rings (25.5 and 27), 6 set screws and hex tool. 6 set screws – 3 for mounting step up ring to light and 3 additional for lens. Some locking thumbscrews may prevent the lens from fitting through the center of the R130, extra low-profile replacement set screws are included, allowing the protruding thumbscrews to be removed.



Step Up Adapter Kits

Step Up Adapter Kits includes step up rings, 6 set screws and hex tool. Lenses can be mounted to front or back of ring light. Filters can also be installed.



M46 step-up	Lens thread size	Part #
46-	25.5	SU46-25.5
46-	27	SU46-27
46-	30.5	SU46-30.5
46-	34	SU46-34
46-	37	SU46-37
46-	37.5	SU46-37.5
46-	39	SU46-39
46-	40.5	SU46-40.5
46-	43	SU46-43

Step Down Adapter Rings

Step Down rings mount large lenses to light. Step Down rings mount lenses to back of ring light. Filters can also be installed.



M46 step-down	Lens thread size	Part #
46-	49	SD46-49
46-	52	SD46-52
46-	55	SD46-55
46-	58	SD46-58
46-	62	SD46-62
46-	67	SD46-67
46-	72	SD46-72